

Openly Accessible GIS Data and Local Government Planning Policy

Dr. Ronán Hennessy

Senior Technical Officer in GIS
Ryan Institute
NUI Galway

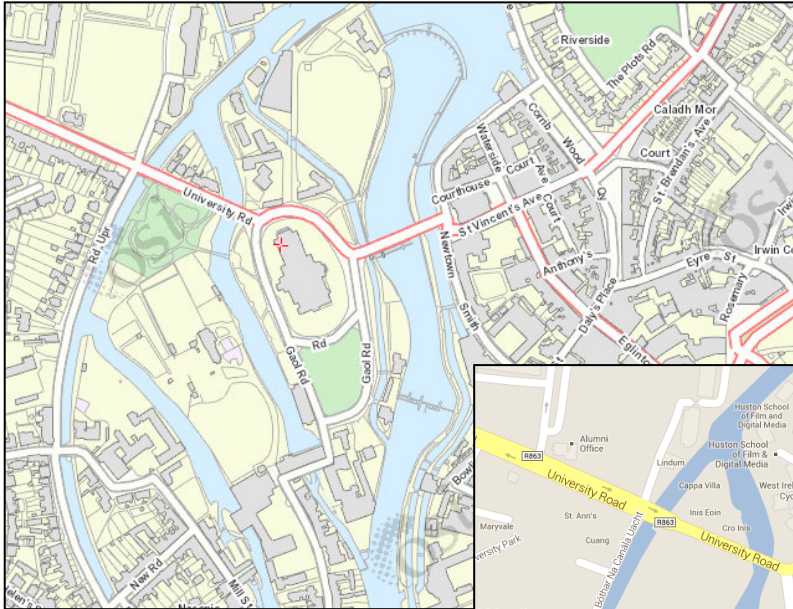
ronan.hennessy@nuigalway.ie

June 2013

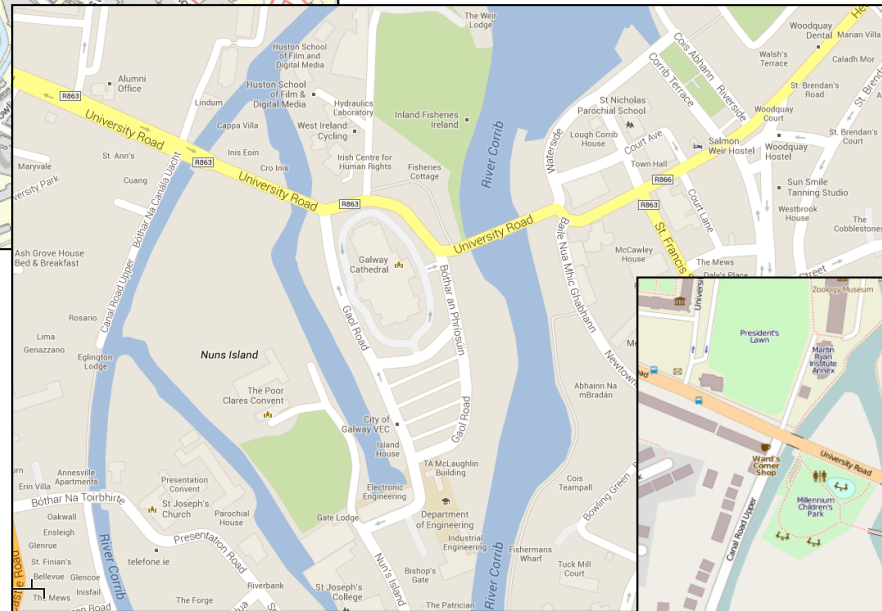


GIS Data: Licenced to Openly Accessible

Ordnance Survey Ireland – WMS (Licenced)



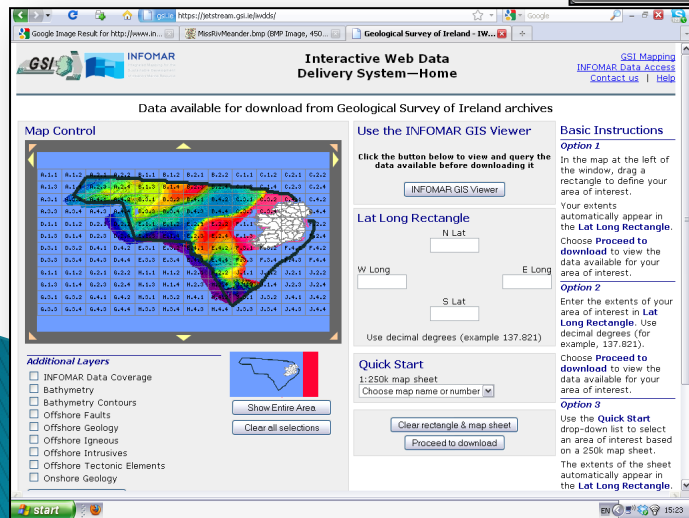
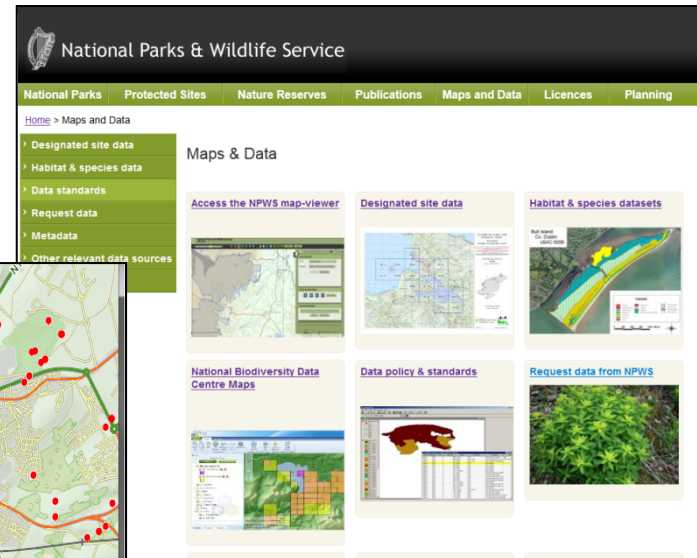
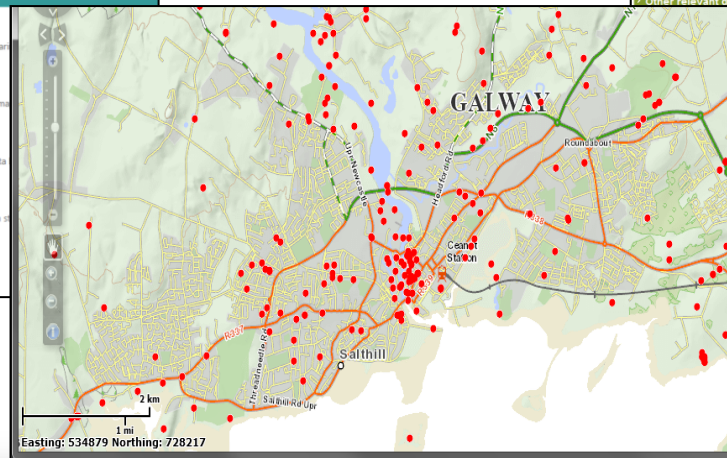
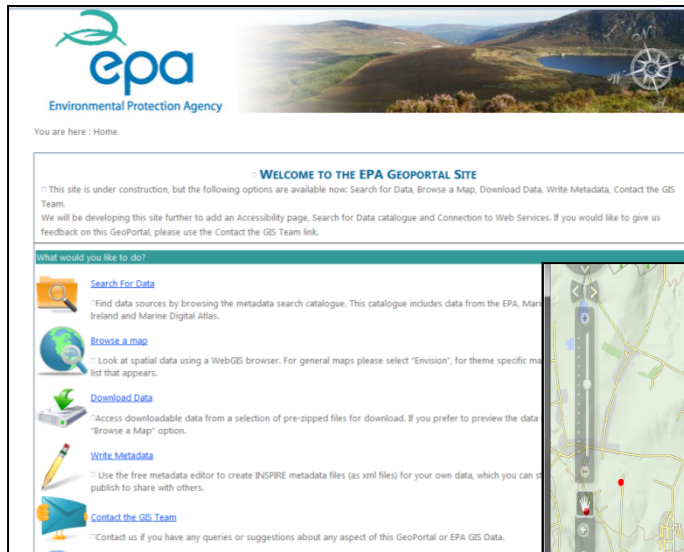
Google Maps
(Limited use)



OpenStreetMap
(Open use)



Sources of Openly Accessible GIS Data:

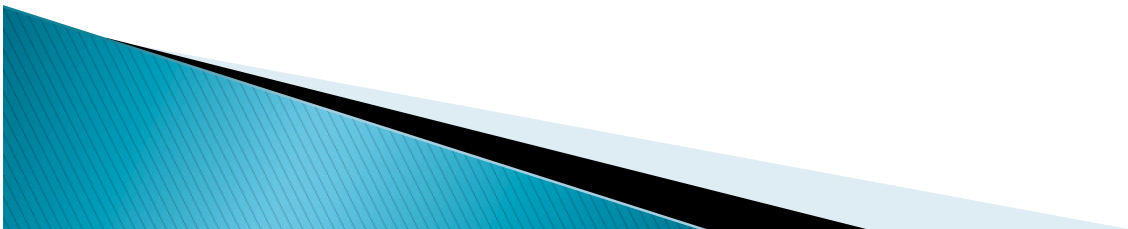


Geological Survey of Ireland (GSI)



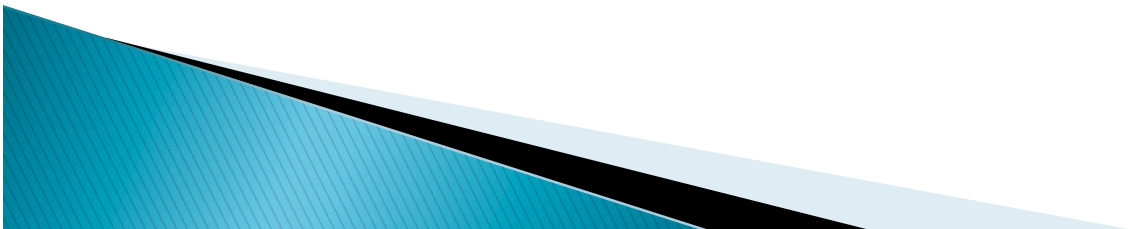
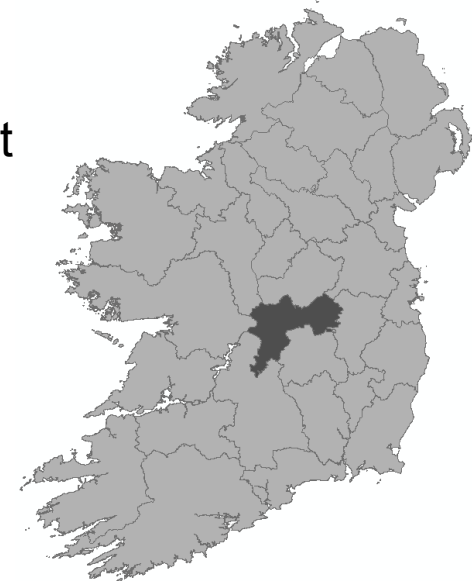
Sources of Openly Accessible GIS Data:

- IRLOGI <http://www.irlogi.ie/>
- National Inventory of Architectural Heritage www.buildingsofireland.ie/Surveys/Buildings
- Central Statistics Office <http://www.cso.ie/en/census/>
- GSI IWDDS <https://jetstream.gsi.ie/iwdds/>
- DCENR <http://www.dcenr.gov.ie/spatial+data>
- Marine Institute <http://www.infomar.ie/data/>
- NPWS <http://www.npws.ie/mapsanddata>
- EPA <http://gis.epa.ie/>
- EPA <http://gis.epa.ie/ENVISION>
- NIEA <http://www.doeni.gov.uk/niea/other-index/digital-intro.htm>
- GISCO http://epp.eurostat.ec.europa.eu/portal/page/portal/gisco_Geographical_information_maps/introduction
- EIONET <http://www.eionet.europa.eu/>



County Development Plans

- Under Section 11(1) of the Planning and Development Act 2000
 - Must conduct 2009-2015 Plan Review
 - 2014 – 2020 County Development Plan
- Strategic Environmental Assessment & Habitats AA
- GIS serves an essential role in compiling and visualising future potential future environmental issues/pressures



Strategic Environmental Assessment - SEA

- Directive 2001/42/EC of the European Parliament (2001)
- An SEA is **mandatory** for plans/programmes which are:
 - ... prepared for agriculture, forestry, fisheries, energy, industry, transport, waste/water management, telecommunications, tourism, town & country planning or land use and which **set the framework** for future development consent of projects listed in the EIA Directive

OR

...have been determined to require an assessment under the **Habitats Directive**.



Strategic Environmental Assessment - SEA

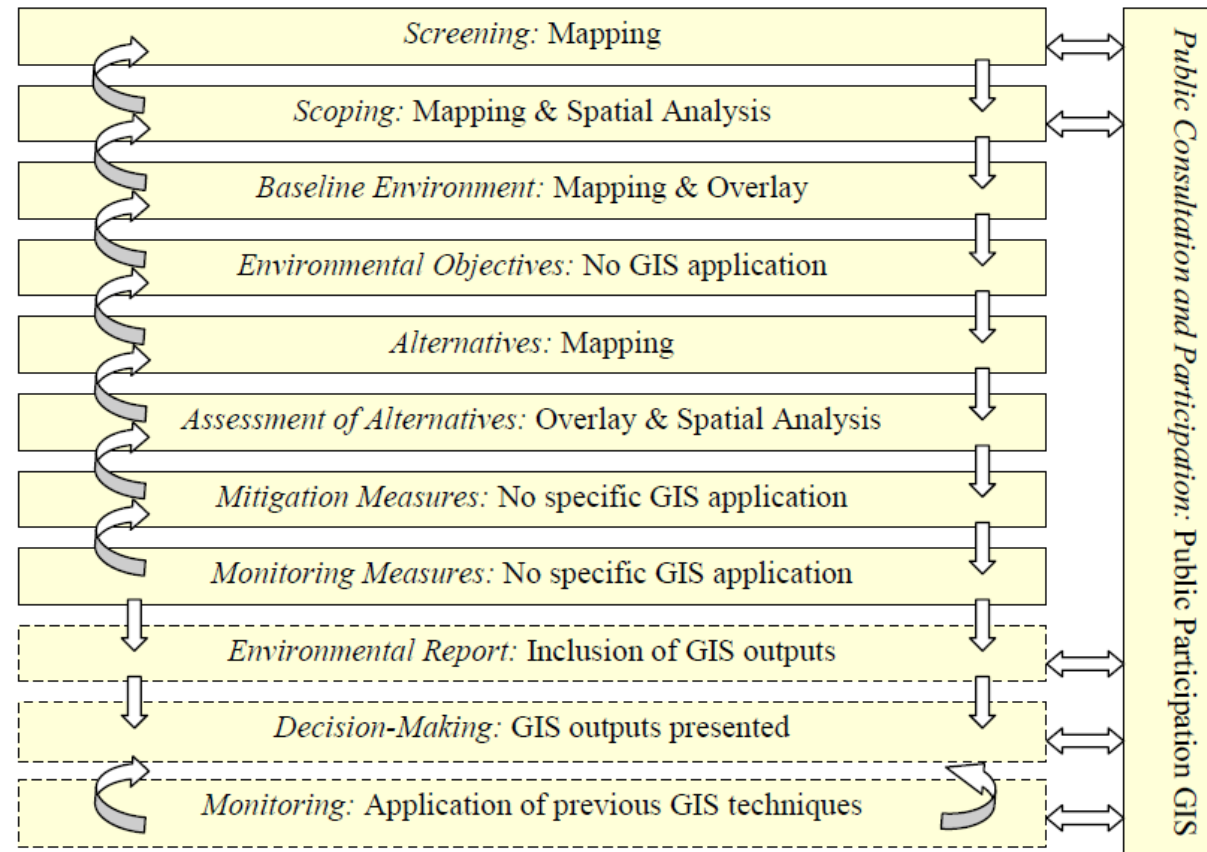
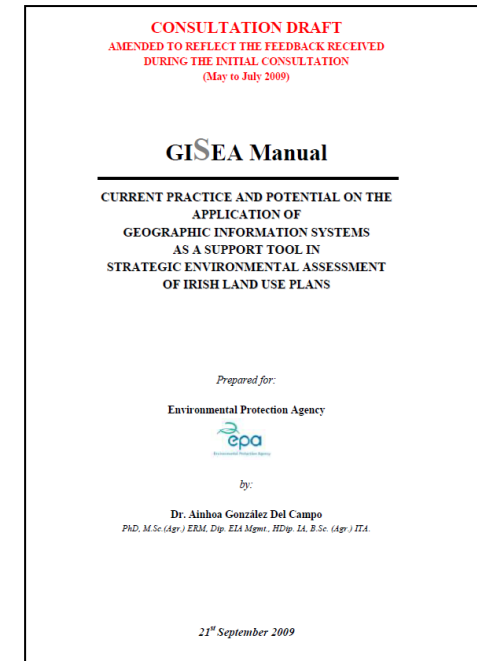


Figure 3.1. SEA stages and GIS application/s for each of the stages.



Irish Geological Heritage Programme – County Geological Sites

- Commenced 1998
- Heritage & Planning Programme GSI & NPWS
- Primary objective of identifying and selecting sites that best represent the geological heritage of Ireland for designation as Natural Heritage Areas.

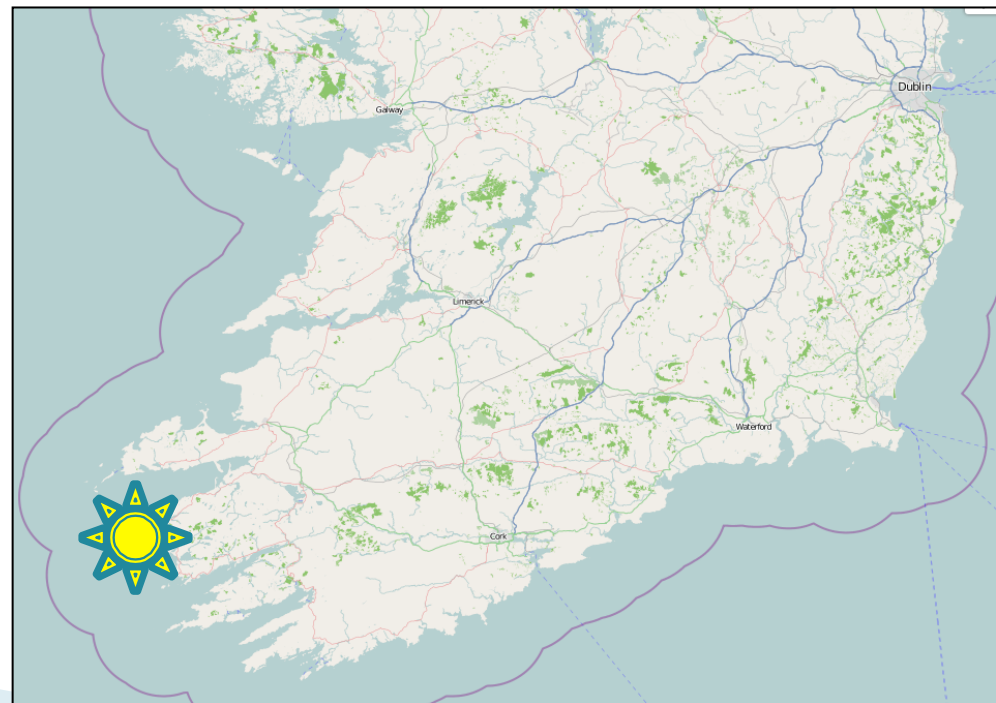
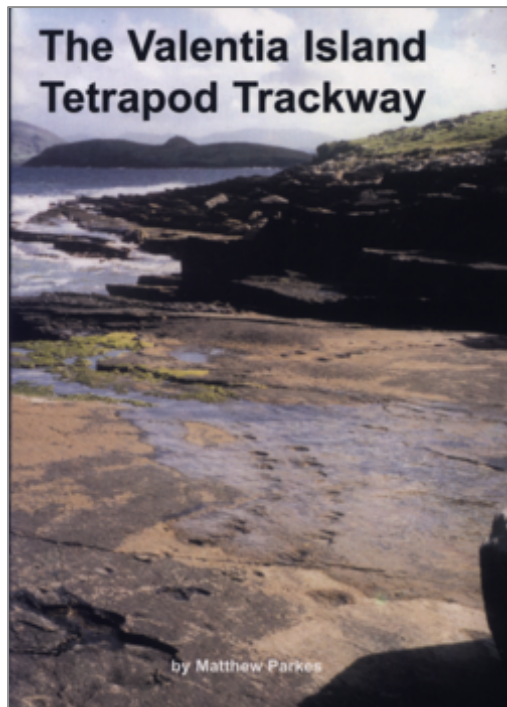
Geology is now recognised as an intrinsic component of natural heritage:

1. Planning and Development Act 2000
2. Planning and Development Regulations 2001
3. Heritage Act 1995
4. Wildlife (Amendment) Act, 2000.

The Heritage Act and the Planning Regulations place responsibility upon Local Authorities to ensure that geological heritage is addressed within Heritage Plans and integrated into revised County Development Plans.

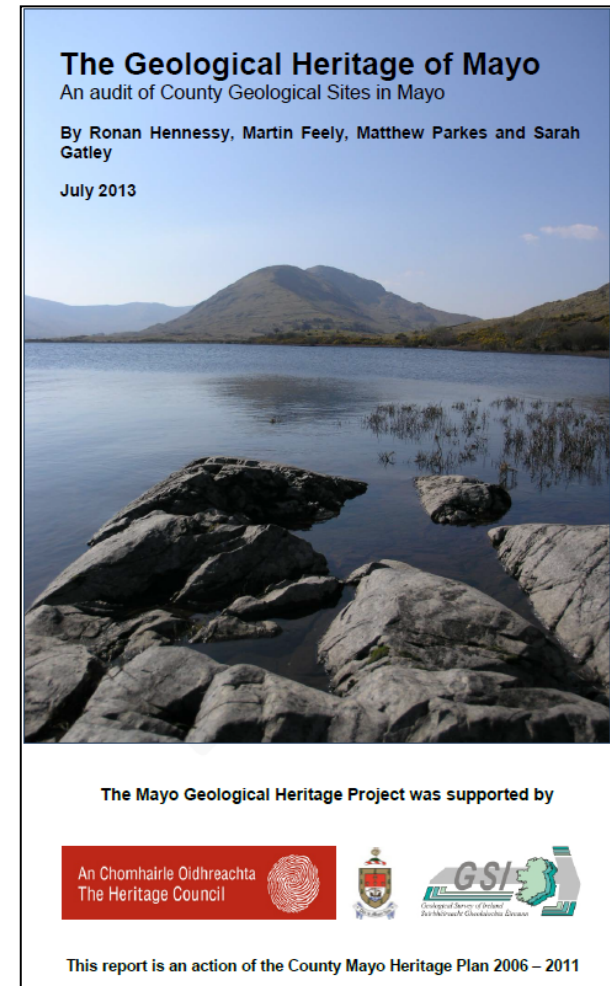


Irish Geological Heritage Programme – County Geological Sites

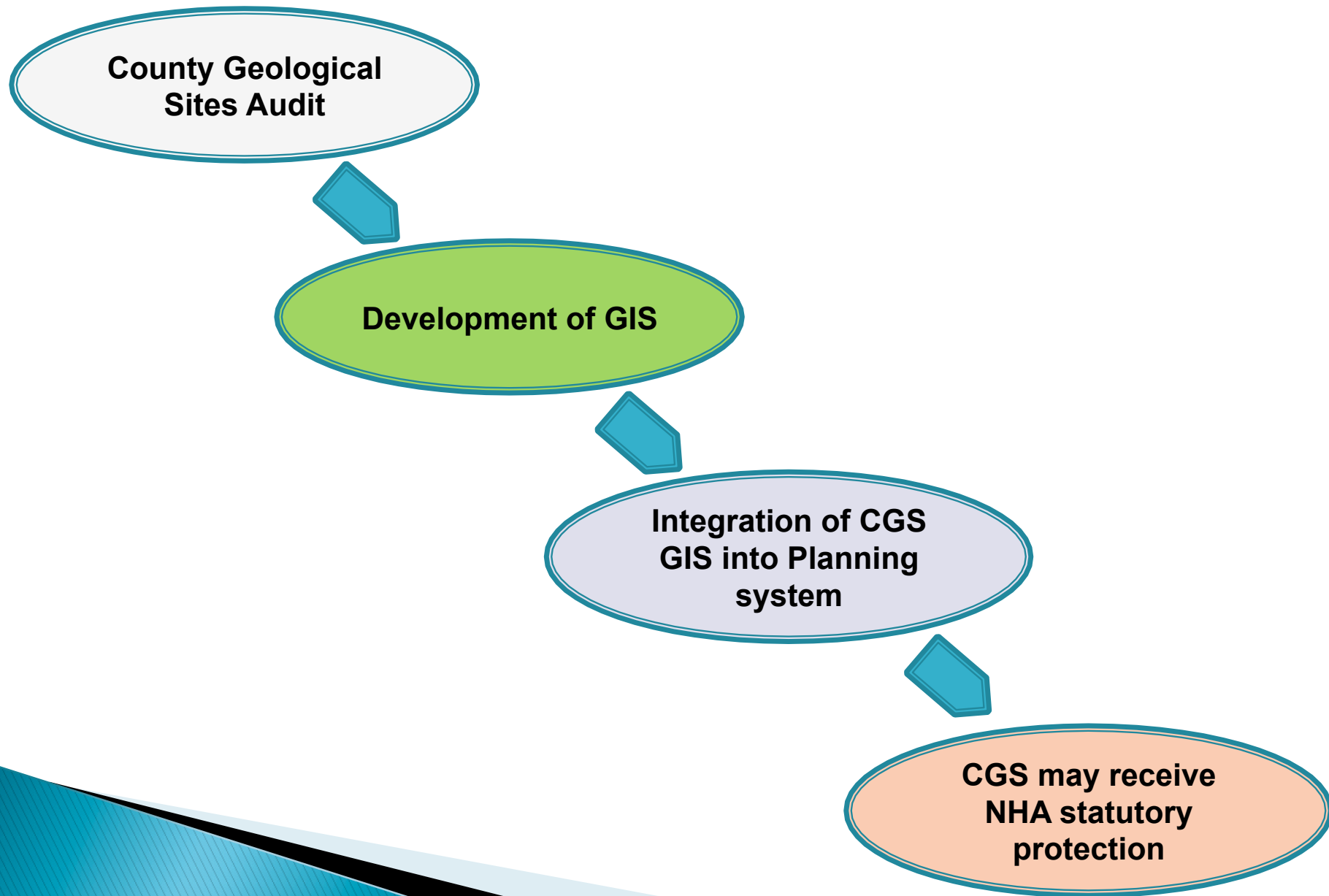


Irish Geological Heritage Programme – County Geological Sites

- County Audits completed to date:
 - Carlow
 - Kildare
 - Sligo
 - Clare
 - Waterford
 - Roscommon
 - Meath
 - Kilkenny
 - Fingal
- Mayo County Council – to be completed in 2013

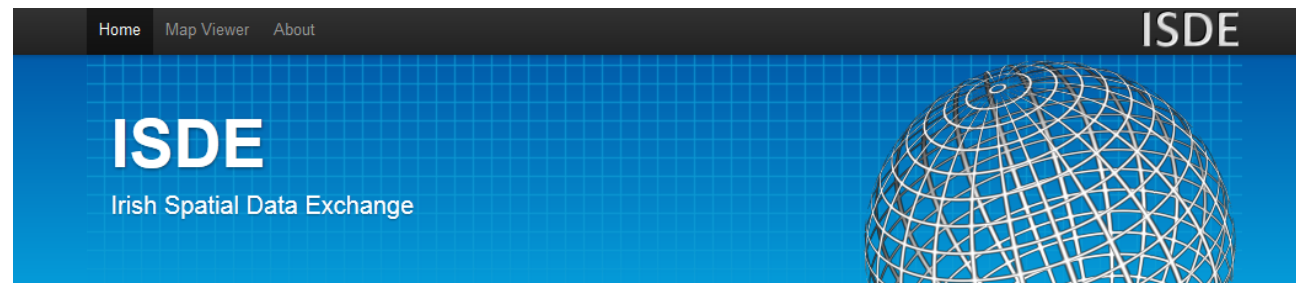


Irish Geological Heritage Programme – County Geological Sites



INSPIRE - Infrastructure for Spatial Information in the European Community

- County Geological Site Audits are INSPIRE compliant
- Directive 2007/2/EC of the European Parliament (May 2007)
- To ensure that spatial data infrastructures of the Member States are compatible and usable in a Community and trans-boundary context.
- ISDE – Irish Spatial Data Exchange



Openly Accessible GIS Data and Local Government Planning Policy

June 2013

Dr. Ronán Hennessy

Senior Technical Officer in GIS
Ryan Institute
NUI Galway

ronan.hennessy@nuigalway.ie